

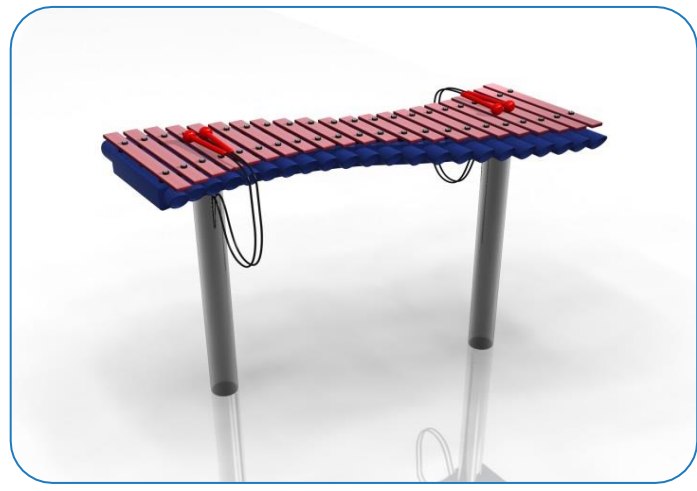
Installation Instructions

Ground Fixed
Duo
Page 1 of 3



- Instrument Components:
-  x8
 - M8x25 Security Screw
 -  x4
 - M6x30 Security Screw
 -  x8
 - M8 Lock washer
 -  x2
 - M6 Saddle Strap

Metric Conversion:
250mm/ 10"
300mm/ 12"
450mm/ 18"
700mm/ 28"
850mm/ 33"
1.5m/ 59"



Weight of heaviest part **14kg** (Duo)

1. Attach the steel legs to the base of the instrument with the M8x25 security screws and lock washers. **(1.1)** (See **Assembly Guide**)

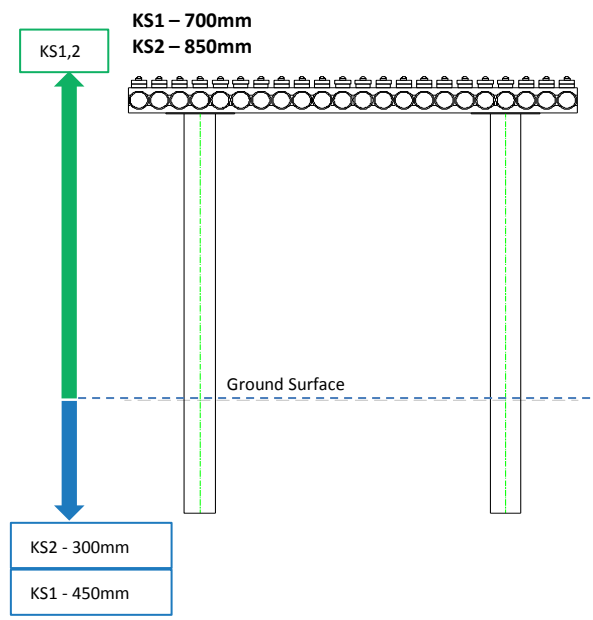
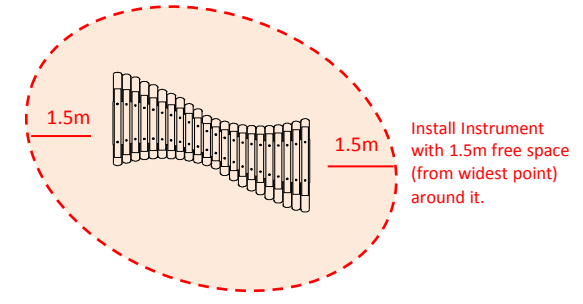
2. Attach Ground Fixing posts to legs **(1.2)** (See **Ground Fix Post Installation Sheet**)

3. **Excavate 2 holes** for the Steel legs **250mm diameter by 300-450mm deep** depending on Key stage, in desired location upon decision from customer.

4. Locate (lower) legs into holes making sure they are vertical and level prior to concreting in place.

5. Once happy with location of the Instrument, **fill** holes using rapid hardening **concrete**. Be sure to compact concrete around legs and leave to dry according to manufactures guidelines.

6. Attach the 1 pair of beater to the saddle strap on the leg. **(1.3)**



Ground Fix Components:





Spares available form
percussionplay.com or from your
local distributor

28 Kg

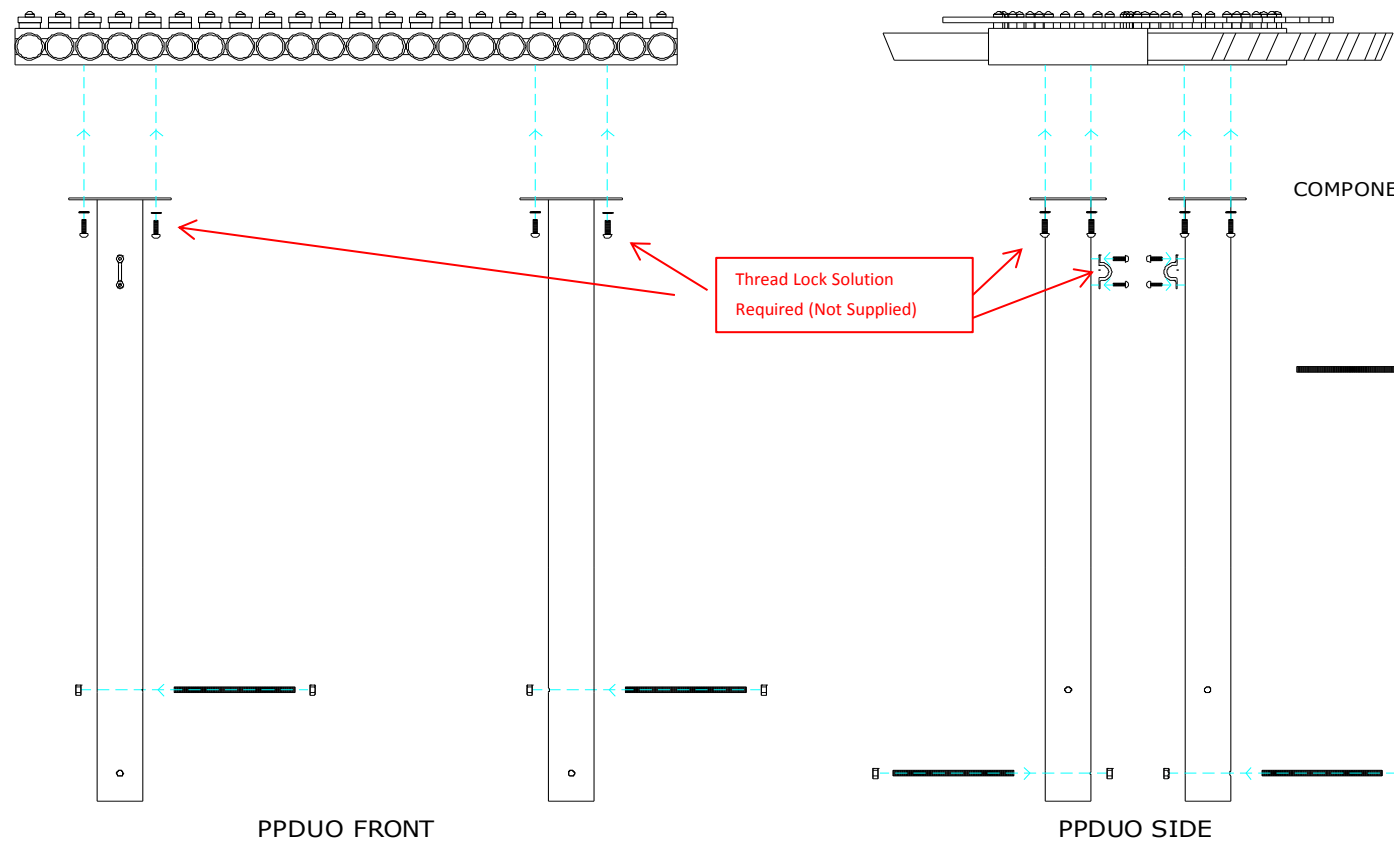
Assembly Guide PPDUO







Tools:

 x1
 x1

TX 30 Driver Bit TX 40 Driver Bit

Ground Fixed
Duo
Page 2 of 3



- COMPONENTS LIST:**
-  M8x25 Pin torx X8
 -  M8 Lock washer X8
 -  M10 Nut X8
 -  M10x200 Threaded Bar X4
 -  Saddle Strap X2
 -  M6x20 Pin torx X4

Instrument Components:

-  x8
M8x25 Security Screw
-  x4
M6x30 Security Screw
-  x8
M8 Lock washer
-  x2
M6 Saddle Strap

Thread Lock Solution
Required (Not Supplied)




Pair Small Red Beaters X2

Ground Fix Components:

-  x4
M10x200 Bolt
-  x8
M10 Nut

Spares available from
percussionplay.com or from your
local distributor

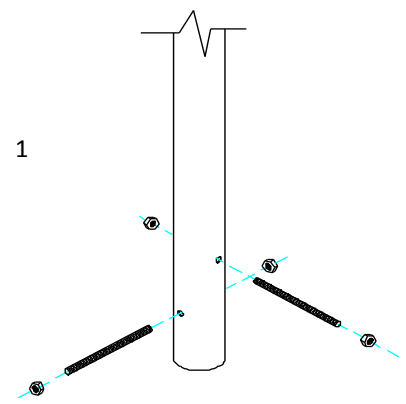
28 Kg

Ground Fix Post Installation

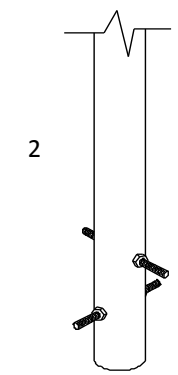
Tools:
x1
TX 45 Driver Bit

Ground Fixed

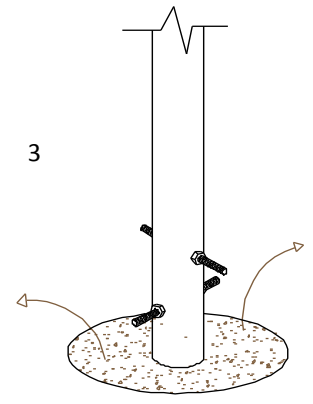
Duo
Page 3 of 3



1
Insert M10x 200 Threaded bar into pre drilled holes in Ground Fixing Post

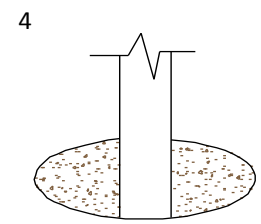


2
Fix M10x 200 Threaded bar in place using M10 Nuts



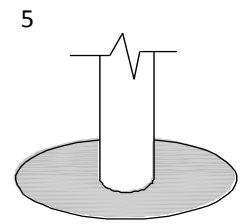
3
Excavate a hole with a 250mm diameter tapering down to 350mm diameter and 350mm depth

Foundations should not present a hazard. These foundations are recommended as a guide, for more information on foundation details for various surface see Part 7 of BS EN 1176.

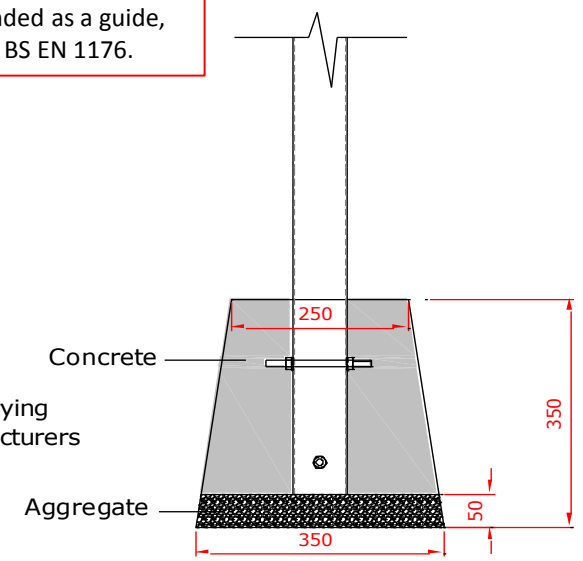


4
Compact base of hole with 50mm of aggregate. Lower ground Fix post attached of instrument into hole (check instrument straight and level before filling with concrete)

300mm min depth



5
Fill hole with fast drying concrete to manufacturers specifications.



Duplicate points 1-5. Duo requires 2 Ground Fix Posts

Components:

-  x4
- M10x200 Bolt
-  x8
- M10 Nut

Metric Conversion:
50mm/ 2"
250mm/ 10"
350mm/ 14"
400mm/ 16"
450mm/ 18"